



Application

- Transfer of clear water or other liquids chemically and physically comparable to water
- Suitable for water supply, automatic sprinkler systems, small air conditioning systems, etc.

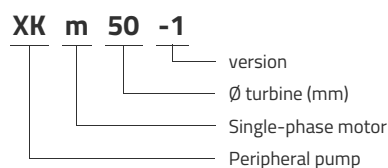
Pompe

- Special anti-rust treatment (cataphoresis) for the cast iron pump body and the lantern
- Brass turbine
- AISI 304 stainless steel shaft
- Maximum liquid temperature: +40°C
- Maximum suction height: 8 m

Moteur

- Integrated thermal protection for single-phase motors
- Insulation class: F
- Protection class: IPX4
- Maximum ambient temperature: +40°C

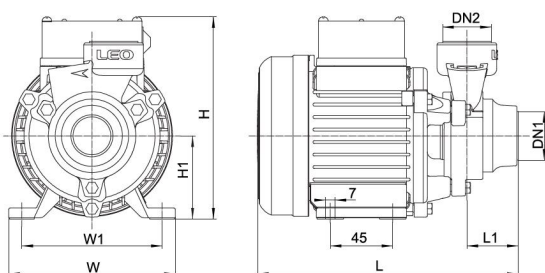
Identification codes



Technical data

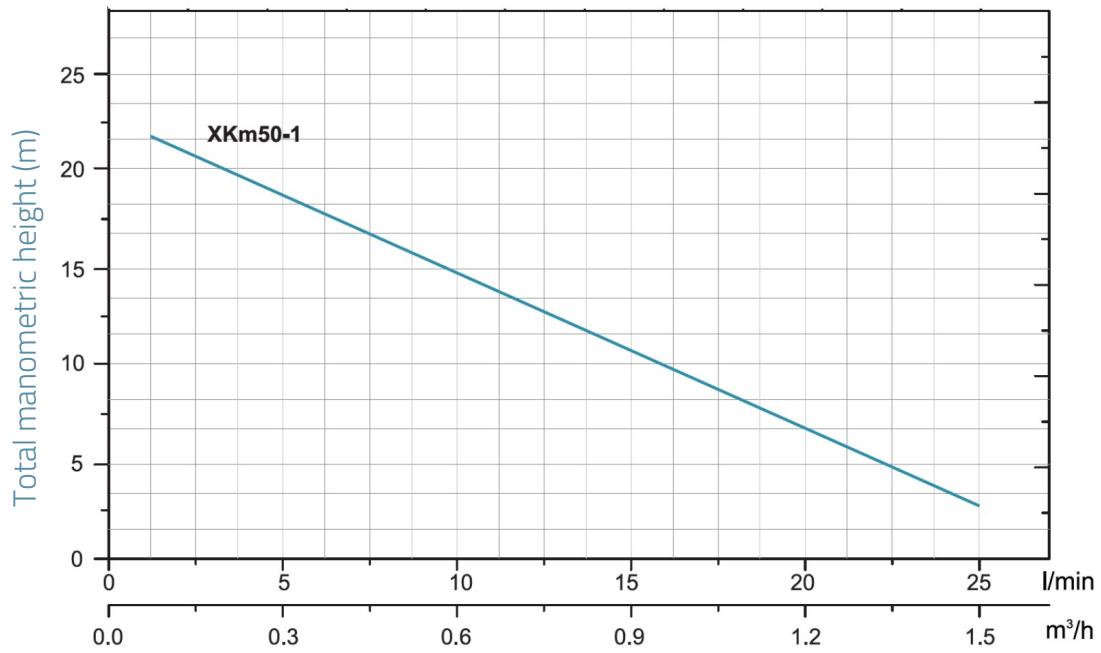
MODEL	kW	Q (m ³ /h)						
		0	0.3	0.6	0.9	1.2	1.5	
XKm50-1	0.11	Q (l/min)						
		0	5	10	15	20	25	
		23	19	15	11	7	3	

Dimensions



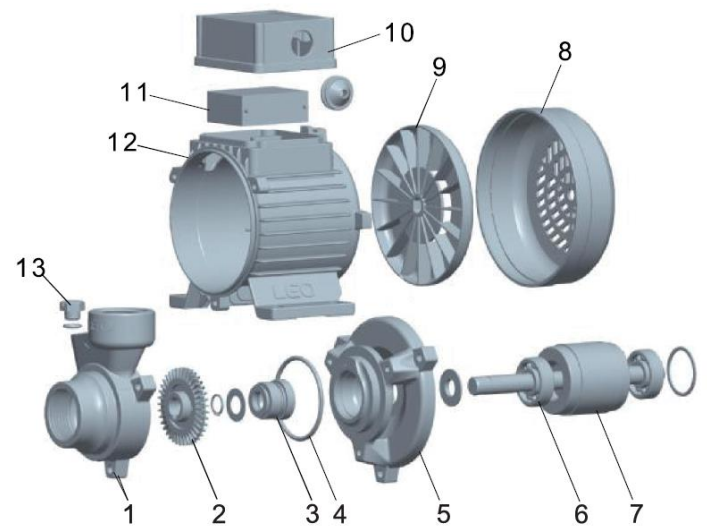
MODEL	DN1	DN2	L	L1	H	H1	W	W1
XKm50-1	1	1	186.5	36	146	60	120	100

Hydraulic performance



Exploded view

No.	Type
1	Pump body
2	Impeller
3	Mechanical seal
4	O-ring
5	Lantern
6	Bearing
7	Rotor
8	Fan cover
9	Fan
10	Electric box cover
11	Capacitor
12	Stator
13	Filling plug



Packaging

MODEL	Weight (kg)	Length L (mm)	Width W (mm)	Height H (mm)
XKm50-1	3.6	200	140	160

